

Rulers

Aluminum, with Mounting Holes

SPECIFICATION

Types

- Type **W**: Figures horizontally arranged (Figure sequences L, M, R)
- Type **S**: Figures vertically arranged (Figure sequences U, M, O)

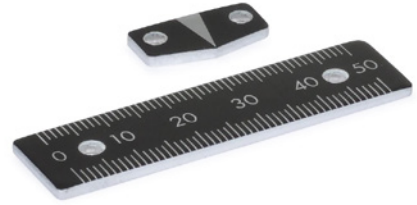
Identification No.

No. **1**: With mounting holes $\varnothing 3.3$

Aluminum AL

- Natural color anodized
- Black imprint
- Numbers and scale etched (i.e. aluminum colored)

Imprint resistant to weak acids and lye solutions, and against solvents in the event of brief contact.



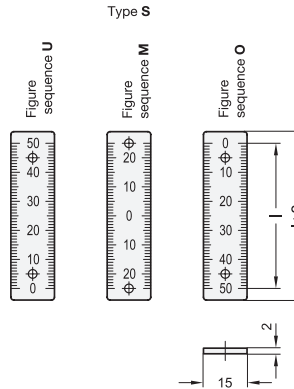
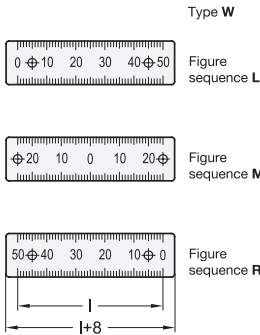
INFORMATION

The position of linear actuator connectors can be easily read from GN 711.2 rulers. The black background creates a high contrast to the natural-colored numbers and scales, and prevents glare. The black background creates a high contrast to the natural-colored numbers and scales, and prevents glare.

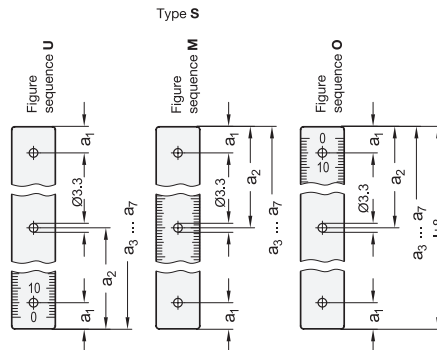
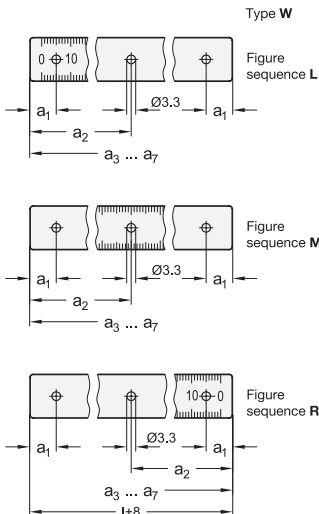
The orientation of the dimensioning of the fastening holes depends on the sequence of the numbers and is shown in the drawing.

ON REQUEST

- Self-adhesive version




Mounting holes




Application example



GN 711.2-W

Description	Length l (Scale)	Number of bores	a1 ±0.1	a2 ±0.1	a3 ±0.1	a4 ±0.1	a5 ±0.1	a6 ±0.1	a7 ±0.1	
GN 711.2-AL-50-W-L-1	50	2	9	-	-	-	-	-	-	10
GN 711.2-AL-100-W-L-1	100	2	9	-	-	-	-	-	-	11
GN 711.2-AL-150-W-L-1	150	2	9	-	-	-	-	-	-	12
GN 711.2-AL-200-W-L-1	200	3	9	99	-	-	-	-	-	15
GN 711.2-AL-300-W-L-1	300	3	9	149	-	-	-	-	-	24
GN 711.2-AL-400-W-L-1	400	4	9	139	269	-	-	-	-	34
GN 711.2-AL-500-W-L-1	500	4	9	169	339	-	-	-	-	40
GN 711.2-AL-750-W-L-1	750*	8	9	129	249	369	389	509	629	60
GN 711.2-AL-1000-W-L-1	1000*	8	9	169	329	499	519	679	839	81
GN 711.2-AL-50-W-M-1	50	2	4	-	-	-	-	-	-	8
GN 711.2-AL-100-W-M-1	100	2	9	-	-	-	-	-	-	9
GN 711.2-AL-150-W-M-1	150	2	4	-	-	-	-	-	-	12
GN 711.2-AL-200-W-M-1	200	3	9	99	-	-	-	-	-	15
GN 711.2-AL-300-W-M-1	300	3	9	149	-	-	-	-	-	26
GN 711.2-AL-400-W-M-1	400	4	9	139	269	-	-	-	-	30
GN 711.2-AL-500-W-M-1	500	4	9	169	339	-	-	-	-	40
GN 711.2-AL-750-W-M-1	750*	8	4	124	254	374	394	504	634	58
GN 711.2-AL-1000-W-M-1	1000*	8	9	169	339	499	519	679	839	81
GN 711.2-AL-50-W-R-1	50	2	9	-	-	-	-	-	-	8
GN 711.2-AL-100-W-R-1	100	2	9	-	-	-	-	-	-	9
GN 711.2-AL-150-W-R-1	150	2	9	-	-	-	-	-	-	12
GN 711.2-AL-200-W-R-1	200	3	9	99	-	-	-	-	-	15
GN 711.2-AL-300-W-R-1	300	3	9	149	-	-	-	-	-	26
GN 711.2-AL-400-W-R-1	400	4	9	139	269	-	-	-	-	30
GN 711.2-AL-500-W-R-1	500	4	9	169	339	-	-	-	-	40
GN 711.2-AL-750-W-R-1	750*	8	9	129	249	369	389	509	629	58
GN 711.2-AL-1000-W-R-1	1000*	8	9	169	329	499	519	679	839	81

GN 711.2-S

Description	Length l (Scale)	Number of bores	a1 ±0.1	a2 ±0.1	a3 ±0.1	a4 ±0.1	a5 ±0.1	a6 ±0.1	a7 ±0.1	
GN 711.2-AL-50-S-U-1	50	2	9	-	-	-	-	-	-	4
GN 711.2-AL-100-S-U-1	100	2	9	-	-	-	-	-	-	8
GN 711.2-AL-150-S-U-1	150	2	9	-	-	-	-	-	-	12
GN 711.2-AL-200-S-U-1	200	3	9	99	-	-	-	-	-	15
GN 711.2-AL-300-S-U-1	300	3	9	149	-	-	-	-	-	24
GN 711.2-AL-400-S-U-1	400	4	9	139	269	-	-	-	-	40
GN 711.2-AL-500-S-U-1	500	4	9	169	339	-	-	-	-	50
GN 711.2-AL-750-S-U-1	750*	8	9	129	249	369	389	509	629	60
GN 711.2-AL-1000-S-U-1	1000*	8	9	169	329	499	519	679	839	80
GN 711.2-AL-50-S-M-1	50	2	4	-	-	-	-	-	-	8
GN 711.2-AL-100-S-M-1	100	2	9	-	-	-	-	-	-	9
GN 711.2-AL-150-S-M-1	150	2	4	-	-	-	-	-	-	12
GN 711.2-AL-200-S-M-1	200	3	9	99	-	-	-	-	-	15
GN 711.2-AL-300-S-M-1	300	3	9	149	-	-	-	-	-	26
GN 711.2-AL-400-S-M-1	400	4	9	139	269	-	-	-	-	30
GN 711.2-AL-500-S-M-1	500	4	9	169	339	-	-	-	-	40
GN 711.2-AL-750-S-M-1	750*	8	4	124	254	374	394	504	634	58
GN 711.2-AL-1000-S-M-1	1000*	8	9	169	339	499	519	679	839	81
GN 711.2-AL-50-S-O-1	50	2	9	-	-	-	-	-	-	5
GN 711.2-AL-100-S-O-1	100	2	9	-	-	-	-	-	-	8
GN 711.2-AL-150-S-O-1	150	2	9	-	-	-	-	-	-	12
GN 711.2-AL-200-S-O-1	200	3	9	99	-	-	-	-	-	15
GN 711.2-AL-300-S-O-1	300	3	9	149	-	-	-	-	-	24
GN 711.2-AL-400-S-O-1	400	4	9	139	269	-	-	-	-	32
GN 711.2-AL-500-S-O-1	500	4	9	169	339	-	-	-	-	40
GN 711.2-AL-750-S-O-1	750*	8	9	129	249	369	389	509	629	50
GN 711.2-AL-1000-S-O-1	1000*	8	9	169	329	499	519	679	839	81

* These lengths consists of 2 parts.



6

Control elements